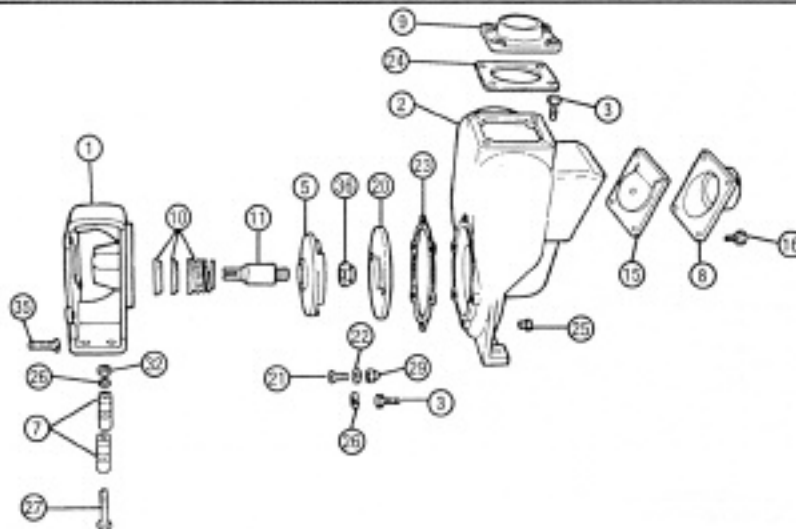


MP PUMPS SERVICE PARTS LIST

- Self Priming
- Electric Motor Drive
- Pumpak
- Close Coupled

Flomax 5 1 1/2" x 1 1/2" Pipe Size

Flomax 8 2" x 2" Pipe Size



IMPORTANT: Read special instructions for item 10.
When ordering parts, specify model and serial number shown on nameplate.
N/S means not shown in exploded view of parts.

ITEM NO.	PART NO.	DESCRIPTION	QUANTITY REQUIRED PER MODEL							
			METAL		CAST IRON		ALUMINUM		BRONZE	
			FLOMAX	MODEL NO.	5	8	5	8	5	8
		7/8" sleeve			26074	25922	26262	26066	26268	26066
		5/8" sleeve			25979	26079	26260	26264	26223	25984

HOUSING

	23021	Housing Assembly Cast Iron — Incl:	1	1						
2		Housing — Cast Iron	1	1						
3	24965	Capscrew — S.S — 5/16" x 3/4"	6	6						
25	21267	Pipe Plug — 1/4"	1	1						
	32019	Housing Assembly R.H. Aluminum Inc.:					1	1		
2		Housing — Aluminum					1	1		
3	24965	Capscrew — S.S — 5/16" x 3/4"					6	6		
25	21267	Pipe Plug — 1/4"					1	1		
	23020	Housing Assembly							1	1
2		Housing — Bronze							1	1
3	24965	Capscrew — S.S — 5/16" x 3/4"							6	6
25	21267	Pipe Plug — 1/4"							1	1
16	21242	Capscrew — S.S. — 5/16" — Flanges	8	8			8	8	8	8
26	21238	Lockwasher — S.S. — 5/16" Housing to Suction — 4 Housing to Discharge — 4	8	8			8	8	8	8
15	23022	Flapper Assembly	1	1			1	1	1	1
23	22255	Gasket — Housing to Adapter	1	1			1	1	1	1
24	22256	Gasket — Outer to Housing	1	1			1	1	1	1

FLANGES

8	22263	Flange — Inlet — Cast Iron — 1-1/2"	1							
8	22387	Flange — Inlet — Cast Iron — 2"		1						
8	22261	Flange — Inlet — Aluminum — 1-1/2"				1				
8	22385	Flange — Inlet — Aluminum — 2"					1			
8	22262	Flange — Inlet — Bronze — 1-1/2"							1	



MP PUMPS, INC.
TECUMSEH PRODUCTS COMPANY

34800 BENNETT DRIVE • FRASER, MI 48026-1688
(586) 293-8240 • FAX (586) 293-8469
(800) 563-8006

FORM 7052-F

PRINTED IN U.S.A. (8-97)

ITEM NO.	PART NO.	DESCRIPTION	QUANTITY REQUIRED PER MODEL						
			METAL	CAST IRON		ALUMINUM		BRONZE	
			FLOMAX	5	8	5	8	5	8
			MODEL NO.						
		7/8" sleeve	26074	25922	26262	26066	26268	26066	
		5/8" sleeve	25979	26079	26260	26264	26223	25984	

FLANGES - Continued

8	22386	Flange — Inlet — Bronze — 2"							1
9	22266	Flange — Outlet — Cast Iron — 1-1/2"	1						
9	22311	Flange — Outlet — Cast Iron — 2"		1					
9	22264	Flange — Outlet — Aluminum — 1-1/2"			1				
9	22309	Flange — Outlet — Aluminum — 2"				1			
9	22265	Flange — Outlet — Bronze — 1-1/2"					1		
9	22310	Flange — Outlet — Bronze — 2"						1	1

IMPELLER

5	22293	Impeller — Cast Iron — 5.0" Dia.	1	1					
5	24585	Impeller — Cast Iron — 4.6" Dia.							
5	25139	Impeller — Cast Iron — 4.1" Dia.							
5	22294	Impeller — Stainless Steel — (Optional)	1	1	1	1	1	1	1
5	22291	Impeller — Aluminum — 5.0" Dia.			1	1			
5	22292	Impeller — Bronze — 5.0" Dia.					1	1	1
36	22655	Impeller — Lock Nut — S.S. — 5"	1	1	1	1	1	1	1
11	22253	Drive Sleeve — S.S. 5/8" Bore For NEMA 56C	1	1	1	1	1	1	1
11	25664	Drive Sleeve — S.S. 7/8" Bore For NEMA 184C — 145TC — 143TC	1	1	1	1	1	1	1

CLAMP

	23002	Clamp Assembly, for 5/8" sleeve — 56C frame — Incl.: Clamp	1	1	1	1	1	1	1
7			2	2	2	2	2	2	2
27	21264	Capscrew — S.S. — 5/16"	2	2	2	2	2	2	2
32	21284	Hex Nut — S.S. — 5/16"	2	2	2	2	2	2	2
26	21238	Lockwasher — S.S. — 5/16"	2	2	2	2	2	2	2
	23003	Clamp Assembly — 7/8" sleeve — 18C — 145TC — 143TC Clamp	1	1	1	1	1	1	1
7			2	2	2	2	2	2	2
27	21264	Capscrew — S.S. — 5/16"	2	2	2	2	2	2	2
32	21284	Hex Nut — S.S. — 5/16"	2	2	2	2	2	2	2
26	21238	Lockwasher — S.S. — 5/16"	2	2	2	2	2	2	2

WEAR PLATE

	23024	Wear Plate Assembly — Steel — Incl.: Wear Plate — Steel	1	1					
20			1	1					
21	21249	Flat Head Screw — S.S. — 5/16"	2	2					
22	21248	Annular Gasket — 1/2"	2	2					
	22270	Wear Plate Assembly — Aluminum — Incl.: Wear Plate — Aluminum			1	1			
20					1	1			
21	21249	Flat Head Screw — S.S. — 5/16"			2	2			
22	21248	Annular Gasket — 1/2"			2	2			
	22271	Wear Plate Assembly — Bronze — Incl.: Wear Plate — Bronze						1	1
20								1	1
21	21249	Flat Head Screw — S.S. — 5/16"						2	2
22	21248	Annular Gasket — 1/2"						2	2
29	21237	Acorn Nut — S.S. — 5/16"	2	2	2	2	2	2	2

SEAL

Be sure you specify whether you want the self-lubricated seal or the grease-lubricated seal.

10	22272	Seal Assembly — Self-lubricated — Incl.:	1	1	1	1	1	1	1
*10	22290	Seal Assembly — Grease Lubricated	1	1	1	1	1	1	1
	22313	Grease Cup N/S	1	1	1	1	1	1	1

ADAPTOR

1	25904	Adaptor — Cast Iron	1	1					
1	25946	Adaptor — Aluminum			1	1			
1	25948	Adaptor — Bronze					1	1	
1	26181	Adaptor — Cast Iron — Grease Seal Assembly	1		1				
35	21251	Capscrew 5/16" — Adaptor To Motor	4	4	4	4	4	4	4
N/S	21238	Lockwasher 5/16" — Adaptor Motor	4	4	4	4	4	4	4

*Optional for special applications.



MP PUMPS, INC.
TECUMSEH PRODUCTS COMPANY

34800 BENNETT DRIVE • FRASER, MI 48026-1686
(586) 293-8240 • FAX (586) 293-8469
(800) 563-8006

FORM 7052-F

PRINTED IN U.S.A. (8-97)